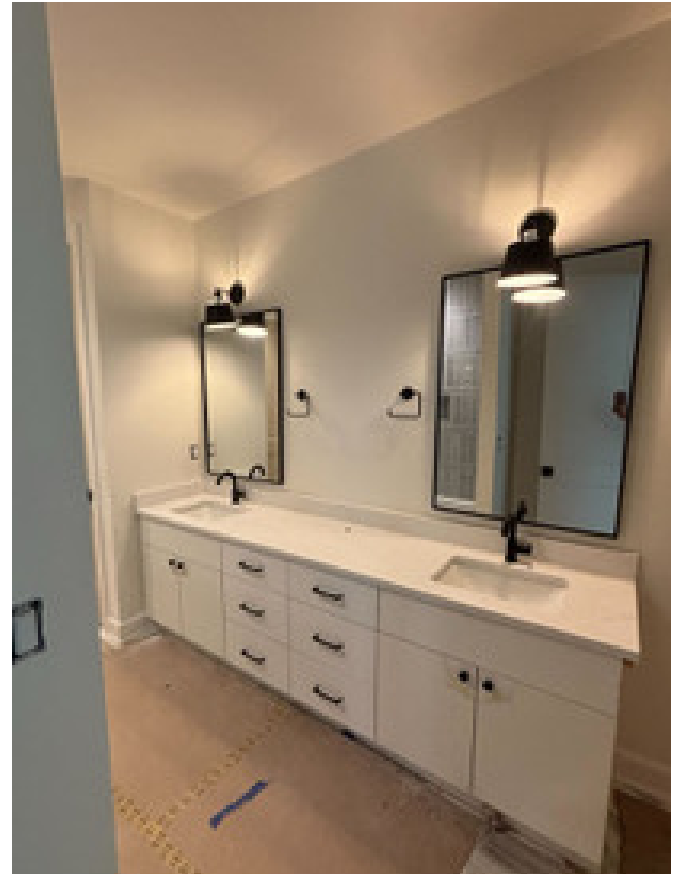


MIRRORS - WHAT ARE THE DIFFERENCES?



Plate Mirror:

- Most common type
- Fabricated in our shop
- Polished edge
- Max Size **120" x 84"** (in-house fabrication)
- Max Size **144" x 72"** (glass fabricator)



Framed Mirror:

- AG has limited frame options—many clients purchase their own frame, and we customize a mirror to fit
- If selecting a beveled mirror for a frame, ensure the bevel is large enough to be seen, as about 1/4" of the mirror will be hidden within the frame
- Max Size **120" x 84"** or **144" x 72"**

AG | A L L U R I N G G L A S S



Beveled Mirror:

- Fabricated at the tempering plant
- Available bevel sizes: **1 1/2"**, **1 1/4"**, **1"**, **1/2"**
- Bevel should be large enough to be noticeable
- Max Size **120" x 84"**



Antique Mirror:

- Chemically altered to create an antique appearance
- Extended lead time required
Max Size **48" x 96"**